

ETCH EXAMPLE ART.4, PARA. 3 HOUSINGS (CAT SEP)

PARKER	
Typ	
Min./Max. Temperatur TS °C	-10 / +140
Min./Max. Temperature TS °C	
Min./Max. Betriebsdruck bar	
Min./Max. Operating Pressure bar	
Fluidgruppe	2
Fluid Group	
Volumen	
Volume	
Herstelljahr	417
Year of Con.	
Hersteller	
Producer	



MUST CONTAIN THESE MANDATORY SAFETY SYMBOLS (ISO7010) " READ INSTRUCTIONS/USER MANUAL" AND WARNING TRIANGLE - SIZE TO BE LEGIBLE AND DEPENDANT ALSO ON HOUSING SIZE/DIA AND RANGE.

ETCH EXAMPLE CAT I / MODULE A HOUSINGS (CE)

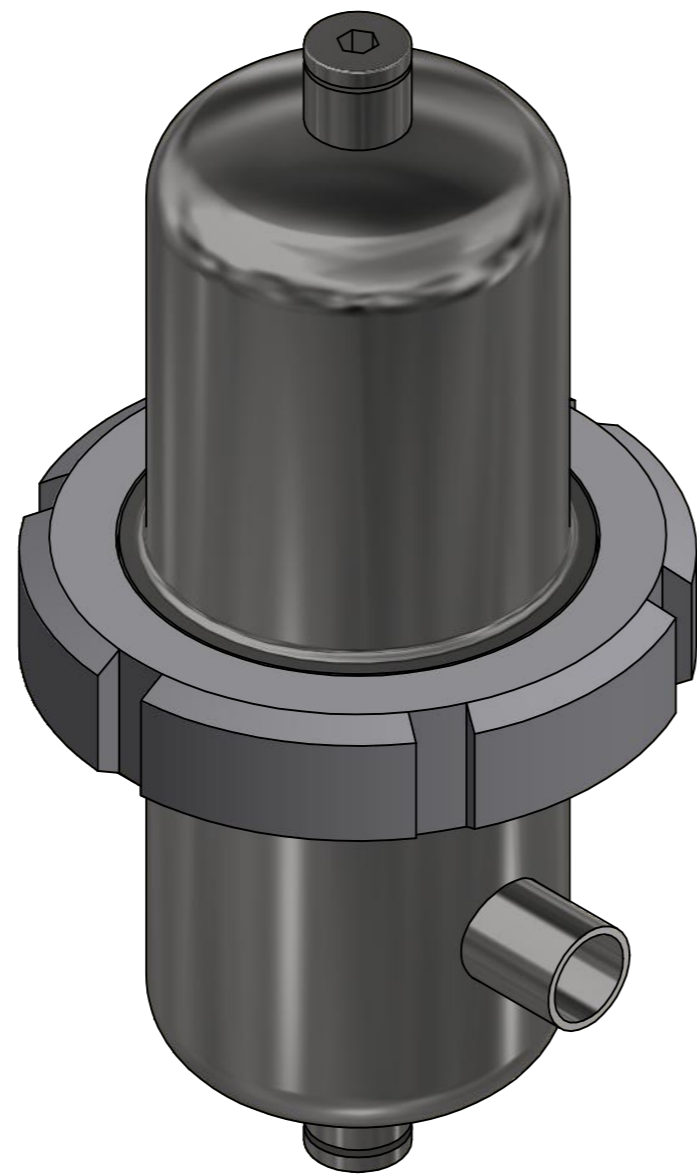
PARKER	
Typ	
Min./Max. Temperatur TS °C	-10 / +140
Min./Max. Temperature TS °C	
Min./Max. Betriebsdruck bar	
Min./Max. Operating Pressure bar	
Fluidgruppe	2
Fluid Group	
Volumen	
Volume	
Herstelljahr	417
Year of Con.	
Hersteller	
Producer	



MUST CONTAIN THESE MANDATORY SAFETY SYMBOLS (ISO7010) " READ INSTRUCTIONS/USER MANUAL" AND WARNING TRIANGLE - SIZE TO BE LEGIBLE AND DEPENDANT ALSO ON HOUSING SIZE/DIA AND RANGE.

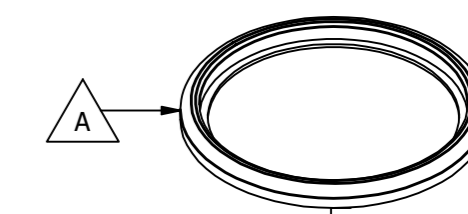
LASER ETCH DATAPLATE REQUIREMENTS

ISO VIEW (1 : 1.25)



REVISION HISTORY						
REV	ECO	ECO DESCRIPTION	ENGINEER	CHECKED BY	APPROVED	DATE
-	0312809	FIRST RELEASE	DF	NM	JH	09/12/2019
A	0321639	UPDATE IN LINE WITH RISK ASSESS.	DF	LS	JH	02/03/2020
B	0331692	ECR-0196548 2B DN8 TO DN10 MOD	DF	RP	JH	04/06/2020

TECHNICAL DATA	
SERIES	VBA
CARTRIDGE SOCKET	TRUESEAL (2.5" & 5") C-STYLE (10", 20" & 30")
DIRECTIVE	2014/68/EU
PED CATEGORY	SEE TABLE
PED FLUID GROUP	2
PHYSICAL STATE	GAS
PRESSURE (PS) MAX	SEE TABLE
TEMPERATURE (TS) min-max	140°C
VESSEL MATERIAL	304L
EXTERNAL SURFACE	MECHANICAL POLISH
INTERNAL SURFACE	ELECTROPOLISH
INTERNAL ROUGHNESS	<0.8 um Ra
VENT CONNECTION [G]	1/4" BSP FEMALE
DRAIN CONNECTION [M]	1/4" BSP FEMALE



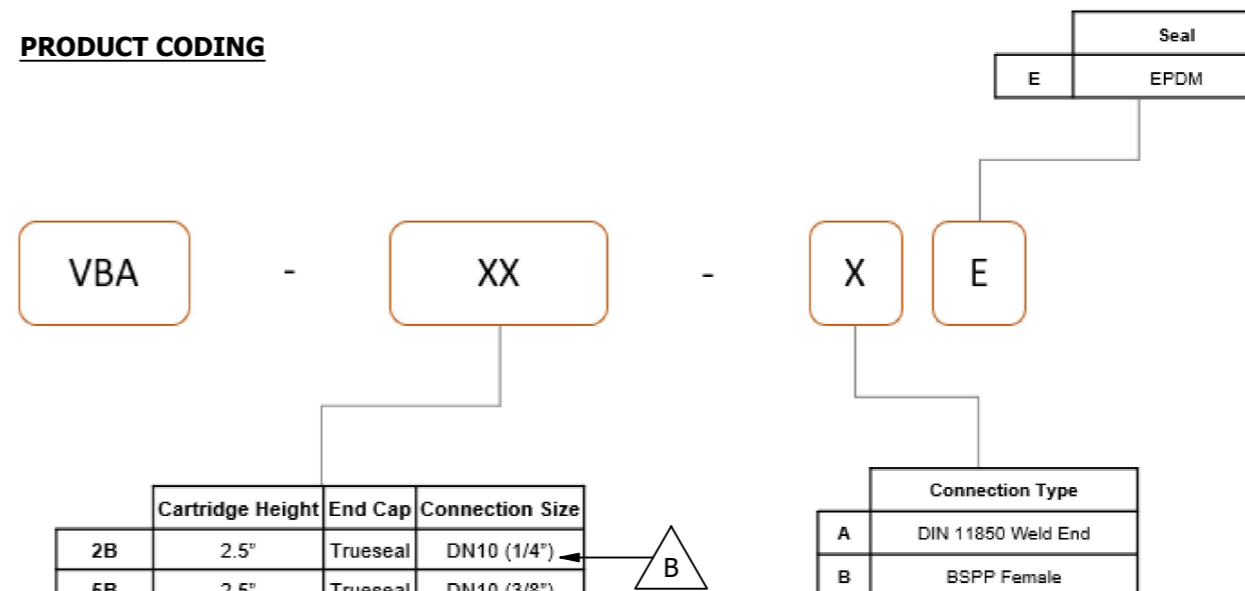
ASEPTIC P-SEAL KIT PART NUMBERS

TABLE		
P-SEAL SIZE	KIT PART #	KIT CODE
DN65	639504151	XHSEP00DN65
DN80	639504152	XHSEP00DN80
DN100	639504153	XHSEP00DN100
DN125	639504154	XHSEP00DN125

DIMENSIONAL DATA											
HOUSING TYPE	VBA-2B	VBA-5B	VBA-7B	VBA-9B	VBA-11A	VBA-12A	VBA-13A	VBA-141	VBA-142	VBA-182	VBA-193
INLET - OUTLET CONNECTIONS	DN10	DN10	DN15	DN20	DN25	DN32	DN40	DN50	DN50	DN65	DN80
CARTRIDGE HEIGHT	2.5"	2.5"	2.5"	2.5"	5"	5"	5"	10"	20"	20"	30"
A (mm)	220	220	220	220	312	312	312	486	792	822	1086
B (mm)	55	55	55	55	75	75	75	80	80	110	110
C [DIN 11850 BUTT WELD] (mm)	108	108	108	108	135	135	135	170	170	200	200
C [BSPP Female] (mm)	147	147	151	151	188	198	198	233	233	275	289

Inlet / Outlet Pipe Ø (mm)	13 x 1.5	13 x 1.5	19 x 1.5	23 x 1.5	29 x 1.5	35 x 1.5	41 x 1.5	53 x 1.5	53 x 1.5	70 x 2	85 x 2
Housing Ø (mm)	70 x 2	70 x 2	70 x 2	70 x 2	85 x 2	85 x 2	85 x 2	104 x 2	104 x 2	129 x 2	129 x 2
Pressure PS (Max)	-1 / 16 Bar	-1 / 16 Bar	-1 / 16 Bar	-1 / 16 Bar	-1 / 16 Bar	-1 / 16 Bar	-1 / 16 Bar	-1 / 16 Bar	-1 / 16 Bar	-1 / 12 Bar	-1 / 12 Bar
Volume (L)	0.7	0.7	0.7	0.7	1.6	1.6	1.6	3.8	6.2	9.9	12.9
PED 2014/68/EU PS.V (BarL)	11.2	11.2	11.2	11.2	25.6	25.6	25.6	60.8	99.2	118.8	154.8
CE MARK	NO	NO	NO	NO	NO	NO	NO	YES	YES	YES	YES
PED 2014/68/EU CATEGORY	Art.4, Para.3	Art.4, Para.3	Art.4, Para.3	Art.4, Para.3	Art.4, Para.3	Art.4, Para.3	Art.4, Para.3	I	I	I	I
PED 2014/68/EU MODULE	N/A	N/A	N/A	N/A	N/A	N/A	N/A	A	A	A	A

PRODUCT CODING



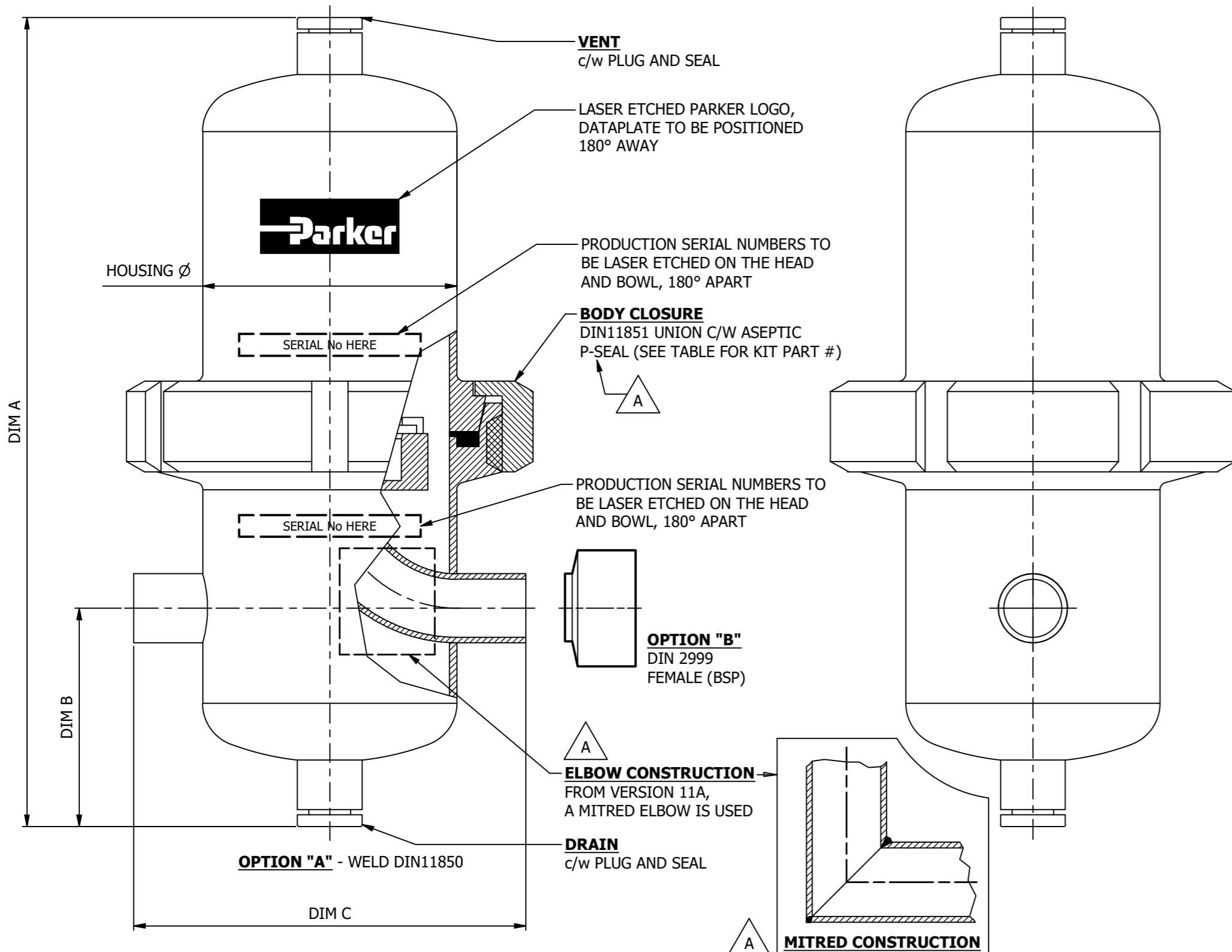
Cartridge Height	End Cap	Connection Size
2B	2.5"	Truseal DN10 (1/4")
5B	2.5"	Truseal DN10 (3/8")
7B	2.5"	Truseal DN15 (1/2")
9B	2.5"	Truseal DN20 (3/4")
11A	5"	Truseal DN25 (1")
12A	5"	Truseal DN32 (1.25")
13A	5"	Truseal DN40 (1.5")
141	10"	C-Style DN50 (2")
142	20"	C-Style DN50 (2")
182	20"	C-Style DN65 (2.5")
193	30"	C-Style DN80 (3")

NOTES

- ETCH ABOVE SHOULD BE POSITIONED 180° FROM PARKER LOGO.
- DOCUMENTATION AND LEGAL CERTIFICATION REQUIREMENTS:

CATEGORY SEP (ART.4, PARA.3) HOUSINGS MUST BE DISPATCHED WITH ADEQUATE INSTRUCTIONS FOR USE, A TEST CERTIFICATE AND PARKER HANNIFIN MANUFACTURER'S DECLARATION (DOC No. ARP 11-44).

CATEGORY I / MODULE A HOUSINGS MUST BE DISPATCHED WITH ADEQUATE INSTRUCTIONS FOR USE, TEST CERTIFICATE AND PARKER HANNIFIN EU DECLARATION OF CONFORMITY (DOC No. ARP 11-45).



DRG NO. 179503030	REVISION B	BASED ON BS 8888	ALL DIMENSIONS IN MILLIMETRES
TITLE VBA HOUSINGS STD RANGE		PARKER HANNIFIN MANUFACTURING LTD BIOSCIENCE FILTRATION - EMEA DURHAM ROAD, BIRTLEY, CO. DURHAM, DH3 2SF UNITED KINGDOM PHONE: +44 (0)191 4105121 EMAIL: BIOSCIENCE.EMEA@PARKER.COM WWW.PARKER.COM/BIOSCIENCE	
DOCUMENT TYPE GENERAL ARRANGEMENT DRAWING		THIS DOCUMENT CONTAINS INFORMATION THAT IS CONFIDENTIAL AND PROPRIETARY TO PARKER HANNIFIN MANUFACTURING LTD. ("PARKER"). THIS DOCUMENT IS FURNISHED ON THE UNDERSTANDING THAT THE DOCUMENT AND THE INFORMATION IT CONTAINS WILL NOT BE COPIED OR DISCLOSED TO OTHERS OR USED FOR ANY OTHER PURPOSE OTHER THAN CONDUCTING BUSINESS WITH PARKER, AND WILL BE RETURNED AND ALL FURTHER USE DISCONTINUED UPON REQUEST BY PARKER. THE RECIPIENT OF THIS DOCUMENT THROUGH ITS OWN ANALYSIS AND TESTING IS SOLELY RESPONSIBLE FOR MAKING THE FINAL SELECTION OF THE APPLICABLE SYSTEM AND COMPONENTS AND ASSURING THAT ALL PERFORMANCE, ENDURANCE, MAINTENANCE, SAFETY AND WARNING REQUIREMENTS OF THE APPLICATION ARE MET. COPYRIGHT PARKER. YEAR OF COPYRIGHT IS FIRST YEAR INDICATED ON THIS DOCUMENT. ALL RIGHTS RESERVED.	
DOCUMENT STATUS <input type="checkbox"/> WORK IN PROGRESS <input checked="" type="checkbox"/> FINAL		DO NOT SCALE - IF IN DOUBT ASK	SCALE: 4:5 @ A2
MATERIAL GEN. ARRT.		UNCONTROLLED IF PRINTED	SHEET 1 OF 1